

TRIM ROAD REALIGNMENT &
ST. JOSEPH BOULEVARD &
OLD MONTREAL ROAD
WIDENING



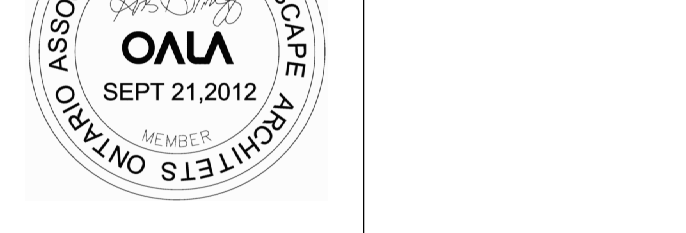
LANDSCAPING PLAN
STORMWATER POND

Contract No. **ISD11-5147** Dwg. No. **L15**

Z. Ghabban, P. Eng. *Manager*
Design & Construction - Municipal East

J. Mojsiej, P. Eng. *Project Manager*
Design & Construction - Municipal East

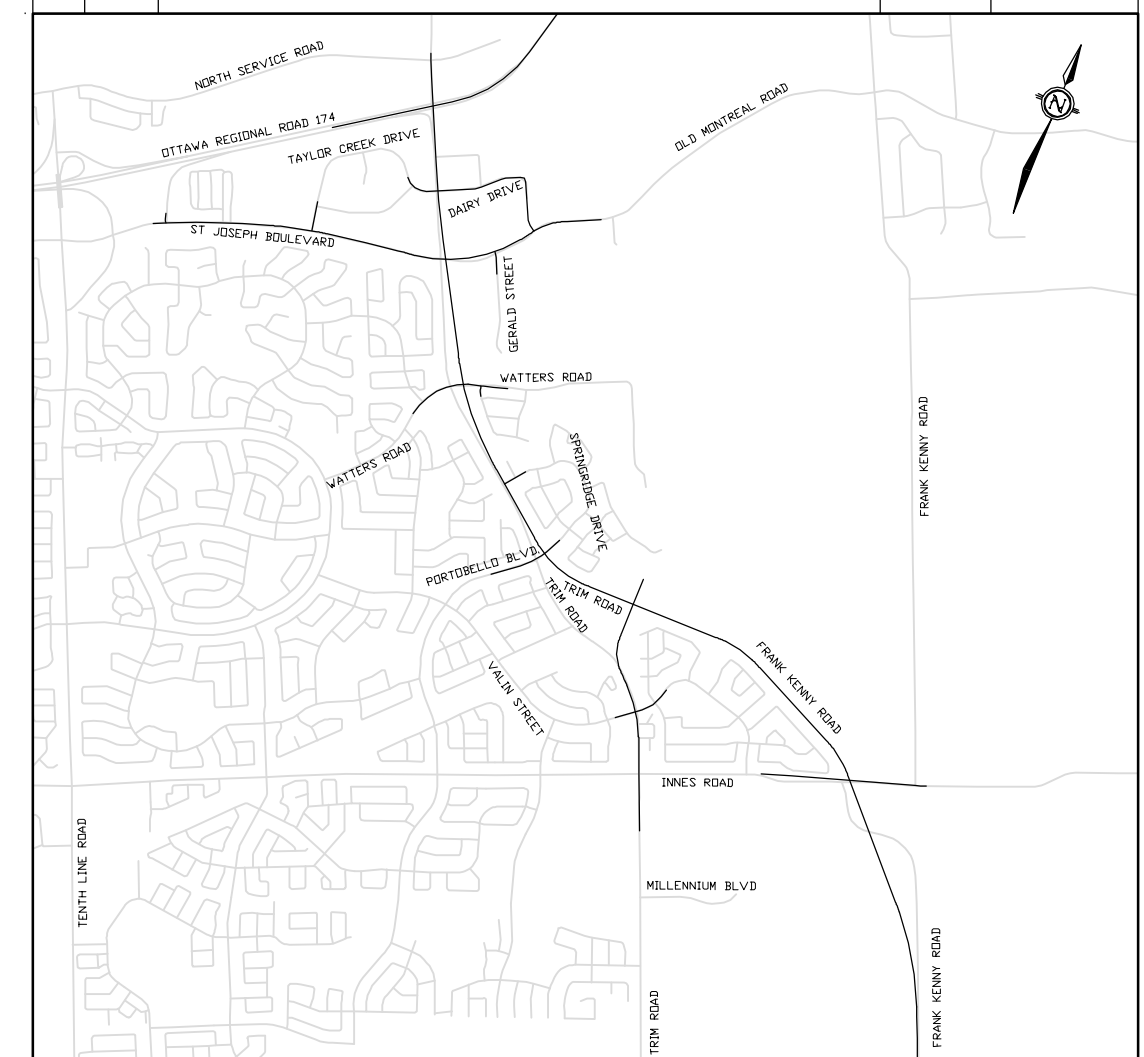
Robinson Consultants & **GENIVAR**



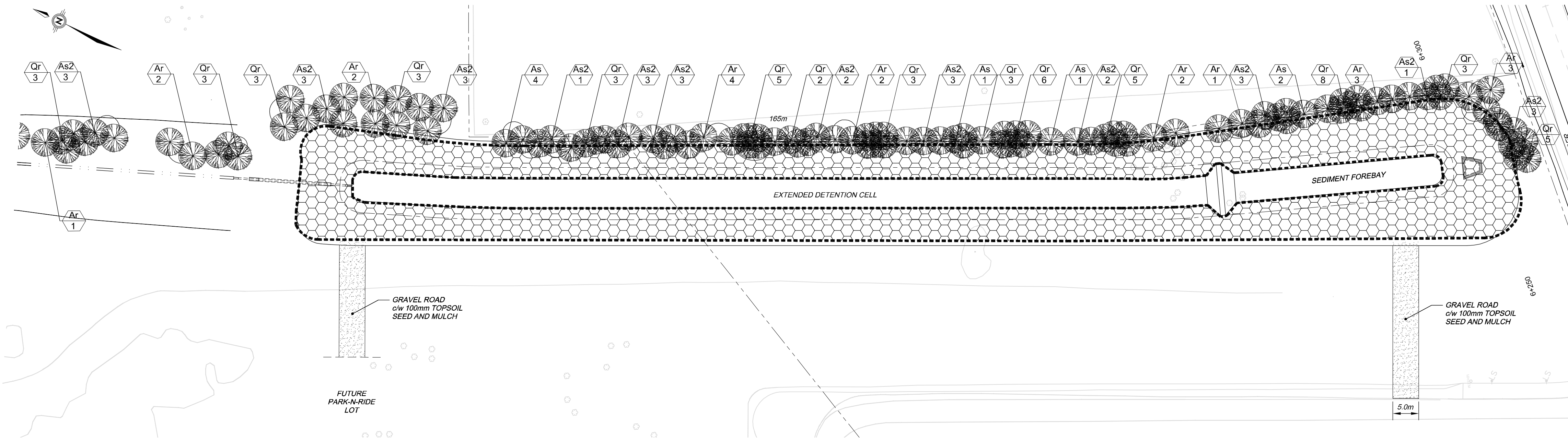
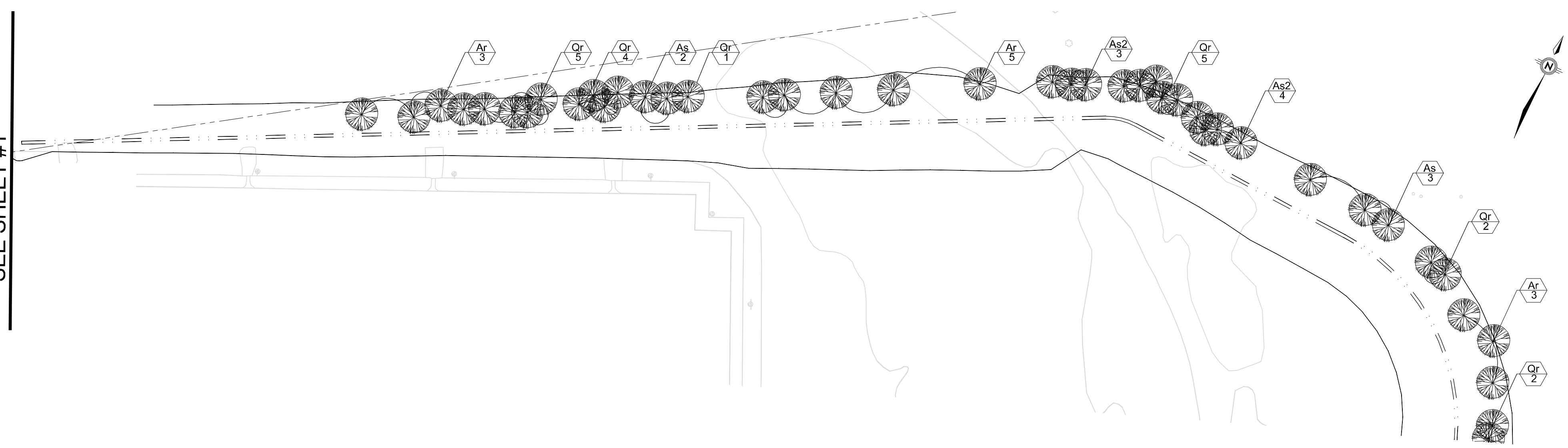
Asset No.	
Asset Group	
Des. KD	Chk'd. KD
Dwn. MF	Chk'd. KD
Utility Circ. No.	Index No.
Const. Inspector	
Scale:	
HORIZONTAL	0m 5 10 20
VERTICAL	0m 1 2

NOTE: The location of utilities is approximate only, the exact location should be determined by consulting the municipal authorities and utility companies concerned. The contractor shall prove the location of utilities and shall be responsible for adequate protection from damage.

No.	Description	By	Date (dd/mm/yy)
1	ISSUED FOR REVIEW	KD	25/05/12
2	ISSUED FOR TENDER	KD	29/06/12
3	ISSUED FOR CONSTRUCTION	KD	21/09/12



SEE SHEET #1



PROPOSED LANDSCAPING

REFER TO SHEET 17:

- Woodland Plantings
- Deciduous Tree Plantings
- Coniferous Tree Plantings
- Shrub Mass Plantings
- Stormwater Management Landscaping - Pond Perimeter
- Unit Pavers

- NOTES:**
- ALL SITE INFORMATION SHOWN COMPILED FROM EXISTING MAPS. ALL DIMENSIONS MUST BE VERIFIED ON SITE AND REPORT ALL DISCREPANCIES.
 - CONTRACTOR TO VERIFY LOCATION OF ALL SUBSURFACE SITE SERVICES PRIOR TO ANY EXCAVATION. CONTRACTOR TO REPAIR ALL DAMAGES AT NO COST TO OWNER(S).
 - REINSTATE ALL AREAS DAMAGED BY CONTRACTOR OUTSIDE DESIGNATED WORK AREAS.
 - ALL GRADED AREAS TO RECEIVE 100 mm TOPSOIL. SEED & MULCH UNLESS OTHERWISE SPECIFIED.
 - ALL EARTH FILL TO BE COMPACTED TO 95% MAX. DRY DENSITY
 - ALL SLOPES TO REMAIN WITHIN R.O.W. UNLESS OTHERWISE NOTED.
 - EXCAVATION FOR TREES/SHRUBS TO BE INCLUDED IN THE UNIT PRICE BID FOR SUPPLY AND INSULATION OF TREES/SHRUBS.
 - ALL MEASUREMENTS ARE IN METERS UNLESS OTHERWISE SHOWN.
 - PROTECT EXISTING TREES TO REMAIN.

ISSUED FOR CONSTRUCTION