

TRIM ROAD REALIGNMENT & ST. JOSEPH BOULEVARD & OLD MONTREAL ROAD WIDENING



Contract No. **ISD11-5147** Dwg. No. **L2**

LANDSCAPING PLAN  
10+350 - 10+950

Z. Ghabban, P. Eng. J. Mojsej, P. Eng.  
Manager Design & Construction - Municipal East Project Manager Design & Construction - Municipal East

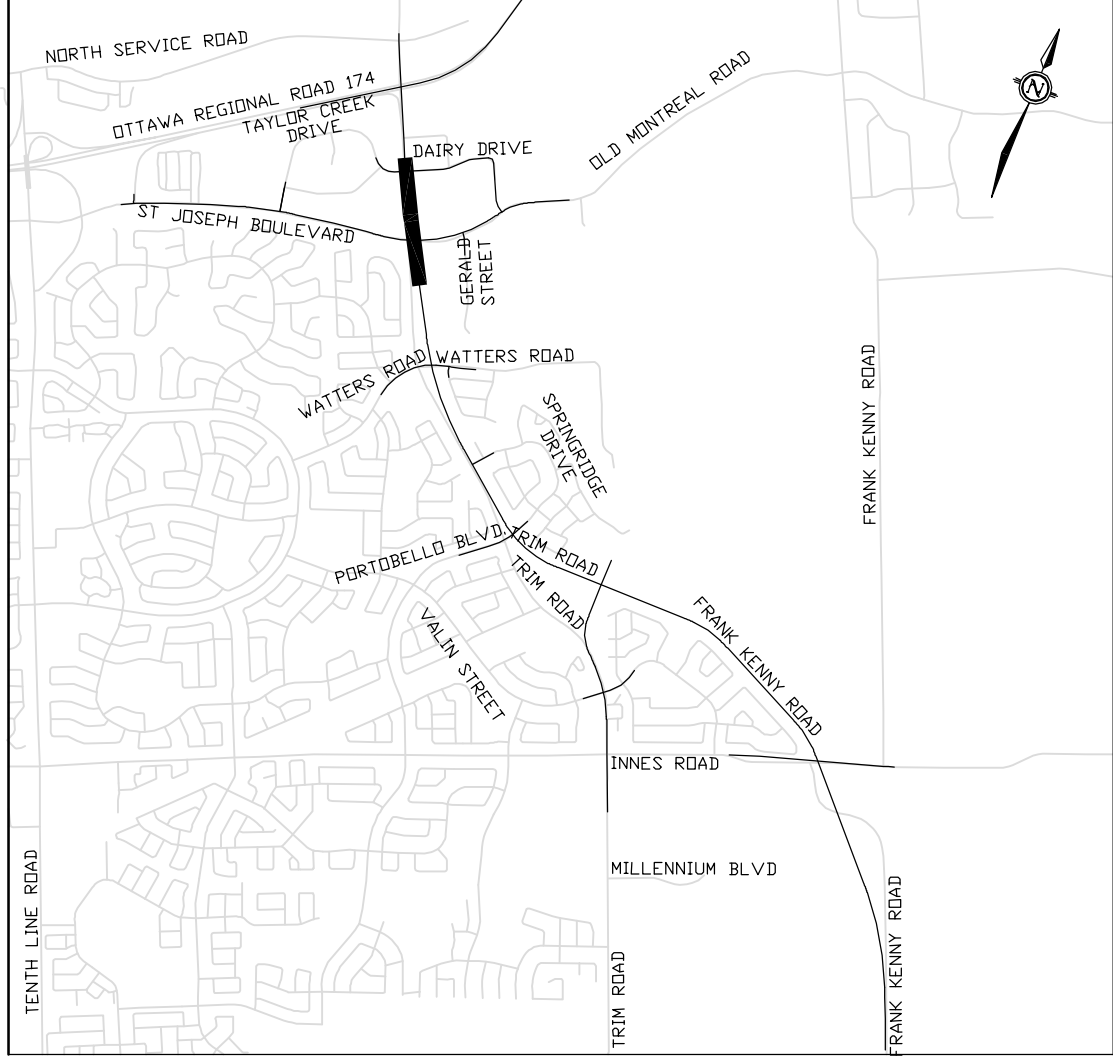
**Robinson Consultants** **GENIVAR**



Asset No.	
Asset Group	
Des. Chkd.	KD
Dwn. Chkd.	KD
Utility Circ. No.	Index No.
Const. Inspector	
Scale:	HORIZONTAL
	0m 5 10 20
	1 2
	VERTICAL

NOTE: The location of utilities is approximate only, the exact location should be determined by consulting the municipal authorities and utility companies concerned. The contractor shall prove the location of utilities and shall be responsible for adequate protection from damage.

No.	Description	By	Date (dd/mm/yy)
1	ISSUED FOR REVIEW	KD	25/05/12
2	ISSUED FOR TENDER	KD	29/06/12
3	ISSUED FOR CONSTRUCTION	KD	21/09/12

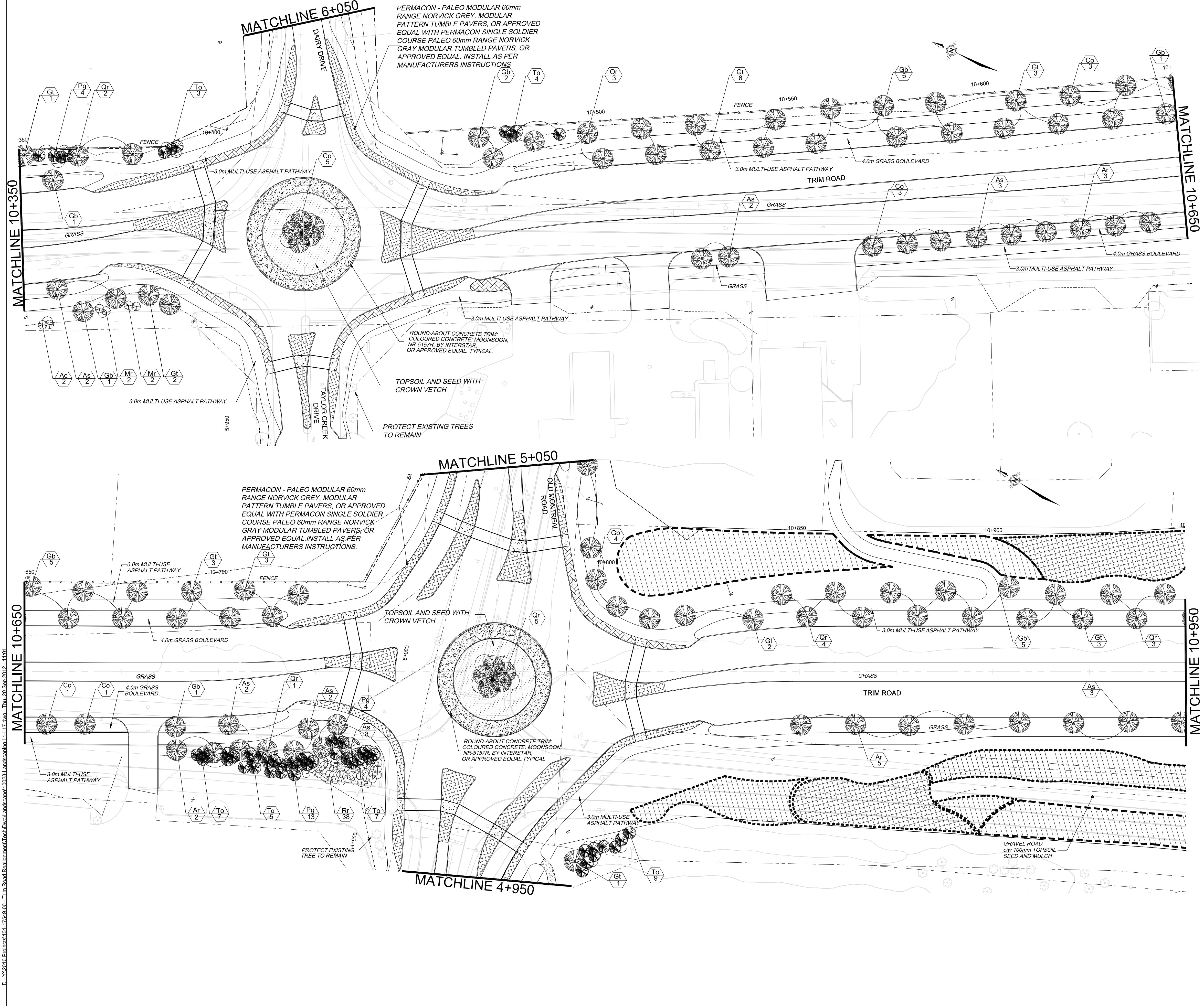


**PROPOSED LANDSCAPING**

- Woodland Plantings
- Deciduous Tree Plantings
- Coniferous Tree Plantings
- Shrub Mass Plantings
- Stormwater Management Landscaping - Pond Perimeter
- Unit Pavers
- Concrete Trim

- NOTES:**
- ALL SITE INFORMATION SHOWN COMPILED FROM EXISTING MAPS. ALL DIMENSIONS MUST BE VERIFIED ON SITE AND REPORT ALL DISCREPANCIES.
  - CONTRACTOR TO VERIFY LOCATION OF ALL SUBSURFACE SITE SERVICES PRIOR TO ANY EXCAVATION. CONTRACTOR TO REPAIR ALL DAMAGES AT NO COST TO OWNER(S).
  - REINSTATE ALL AREAS DAMAGED BY CONTRACTOR OUTSIDE DESIGNATED WORK AREAS.
  - ALL GRADED AREAS TO RECEIVE 100 mm TOPSOIL. SEED & MULCH UNLESS OTHERWISE SPECIFIED.
  - ALL EARTH FILL TO BE COMPACTED TO 95% MAX. DRY DENSITY
  - ALL SLOPES TO REMAIN WITHIN R.O.W. UNLESS OTHERWISE NOTED.
  - EXCAVATION FOR TREES/SHRUBS TO BE INCLUDED IN THE UNIT PRICE BID FOR SUPPLY AND INSULATION OF TREES/SHRUBS.
  - ALL MEASUREMENTS ARE IN METERS UNLESS OTHERWISE SHOWN.
  - PROTECT EXISTING TREES TO REMAIN.

**ISSUED FOR CONSTRUCTION**



ID: 112012010\_Eng00000101\_17549\_000 - Trim Road Realignment/Expansion/Expansion/Landscaping L1-L2.dwg - Thu, 20 Sep 2012 - 11:01